

Instructions for use the LBE16 Washing Machine



<i>Index</i>	<i>Pag.</i>
1. Instructions for unpack and transport	2
2. Plinth dismount	3
3. Rubber strap dismount	4
4. Rubber strap use	5
5. Door dismount	6
6. Cleaning	7

1. Instruction for unpack and transport



NO



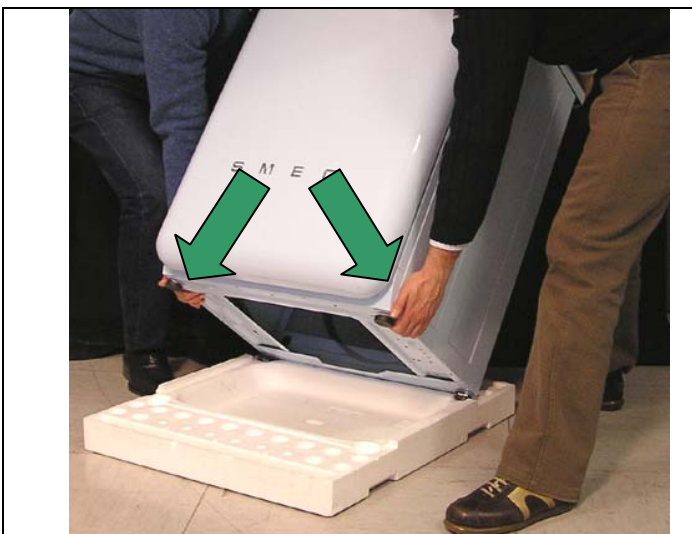
NO



NO



NO

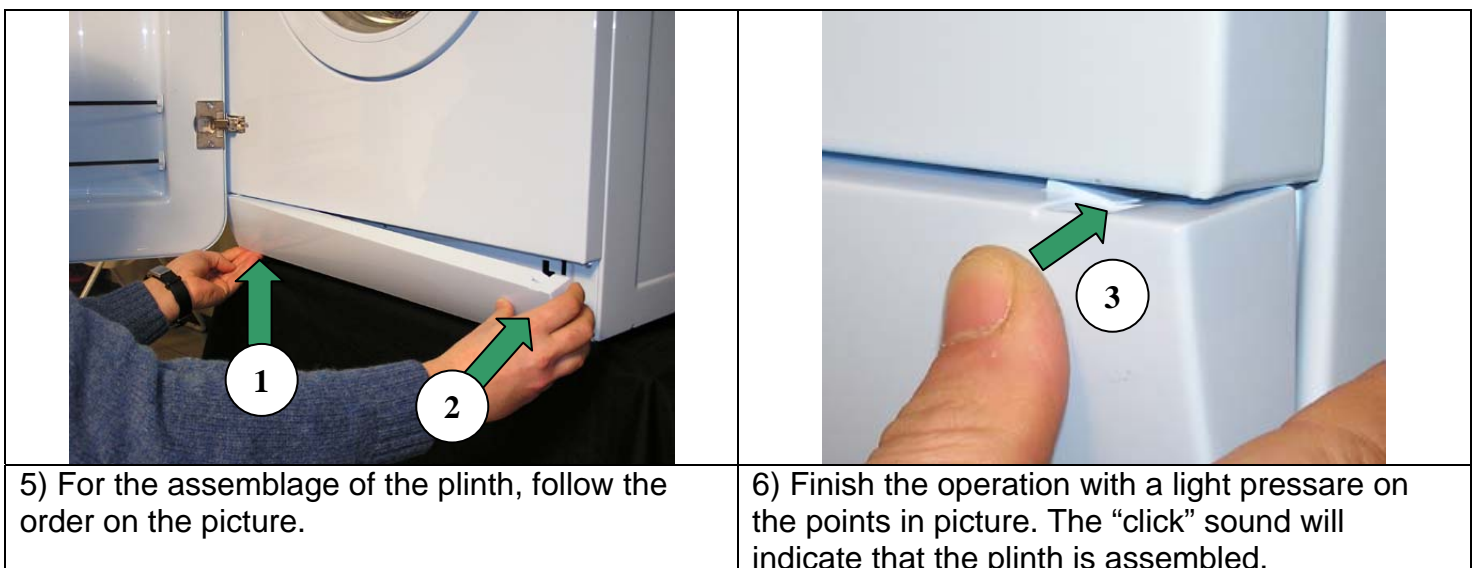
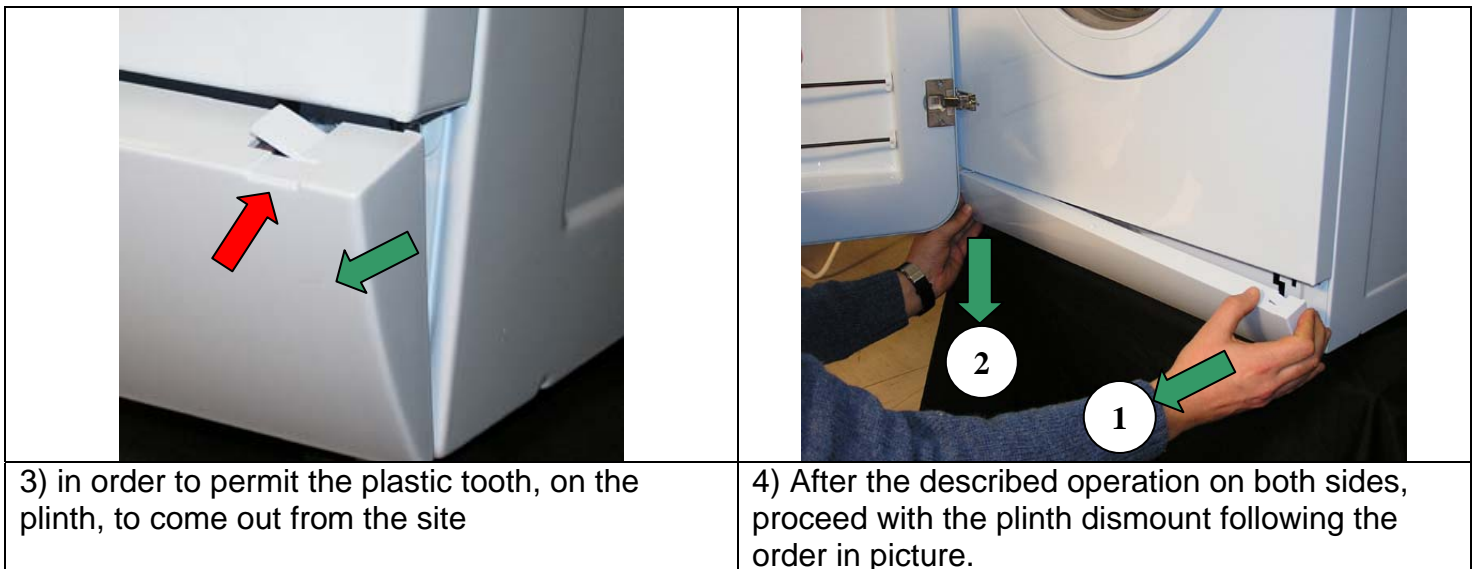
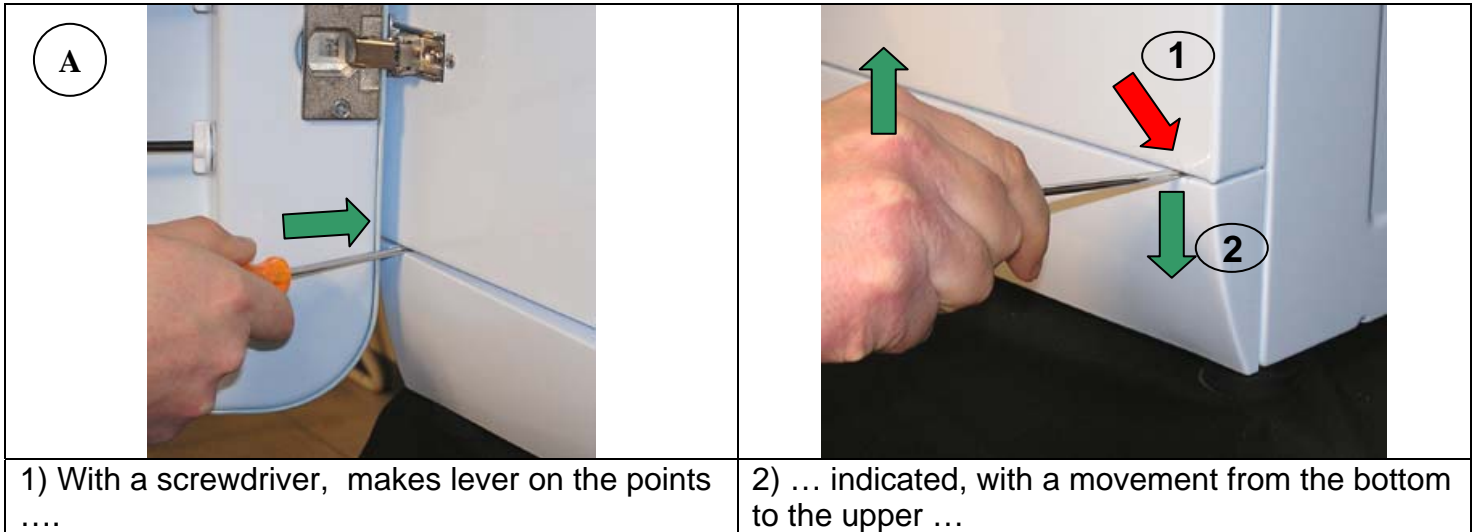


YES

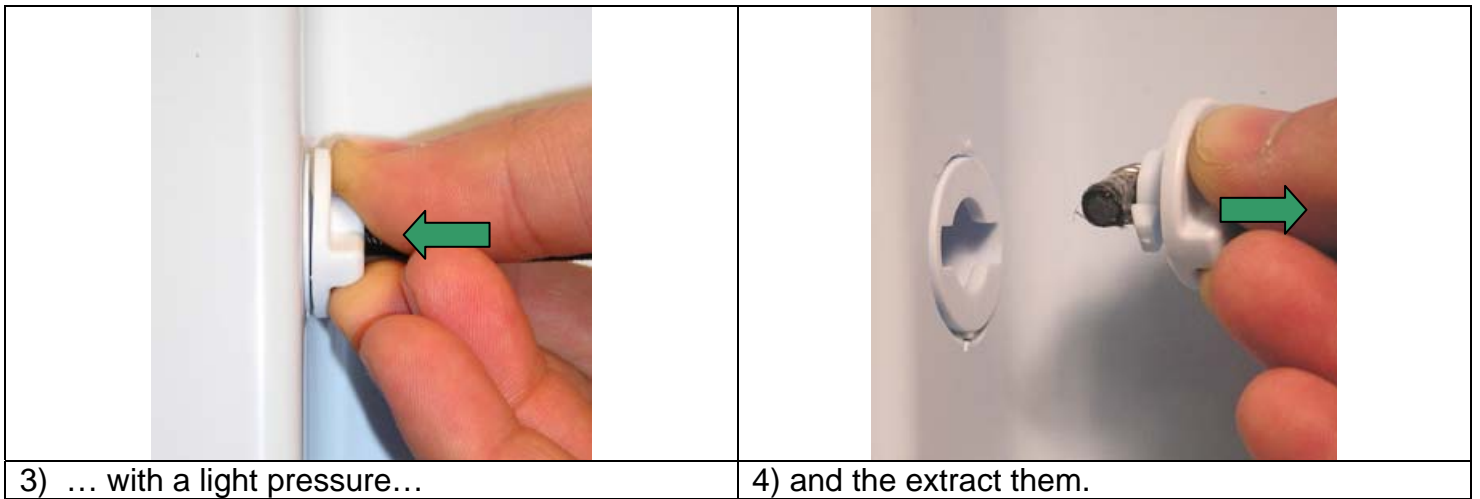
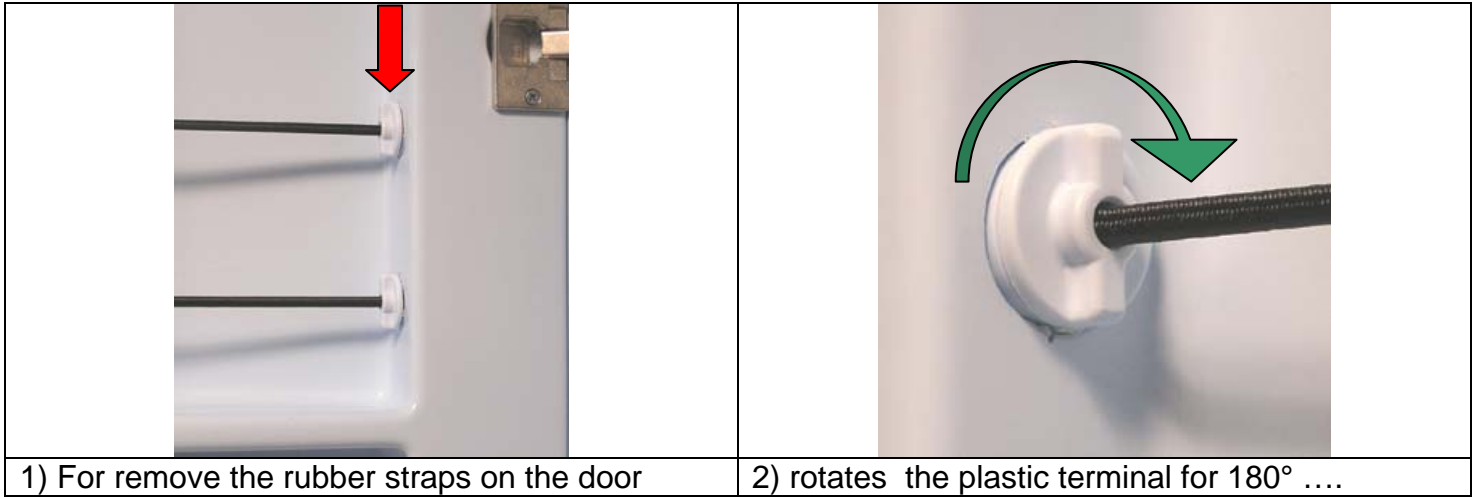


YES

2. Plinth dismount



3. Rubber strap dismount



4. Rubber strap use



In picture, the possibility to insert some products in the vain can be appreciated ...

ATTENTION:
Weight Max 4,0kg



... these products are of daily use, e.g. detergents, softener etc.

ATTENTION

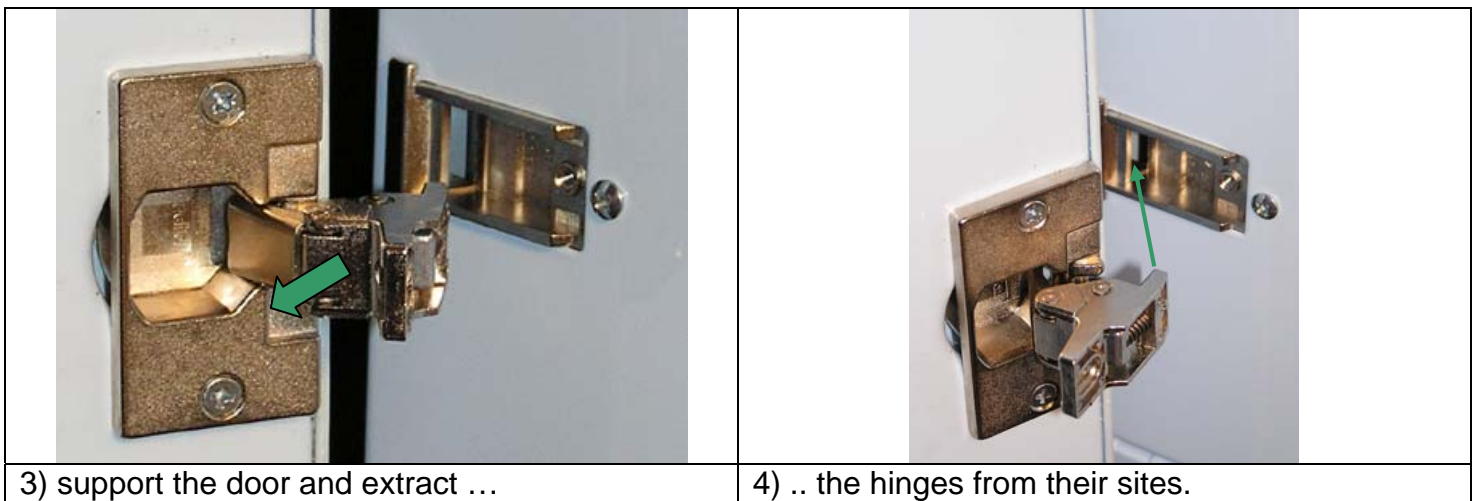
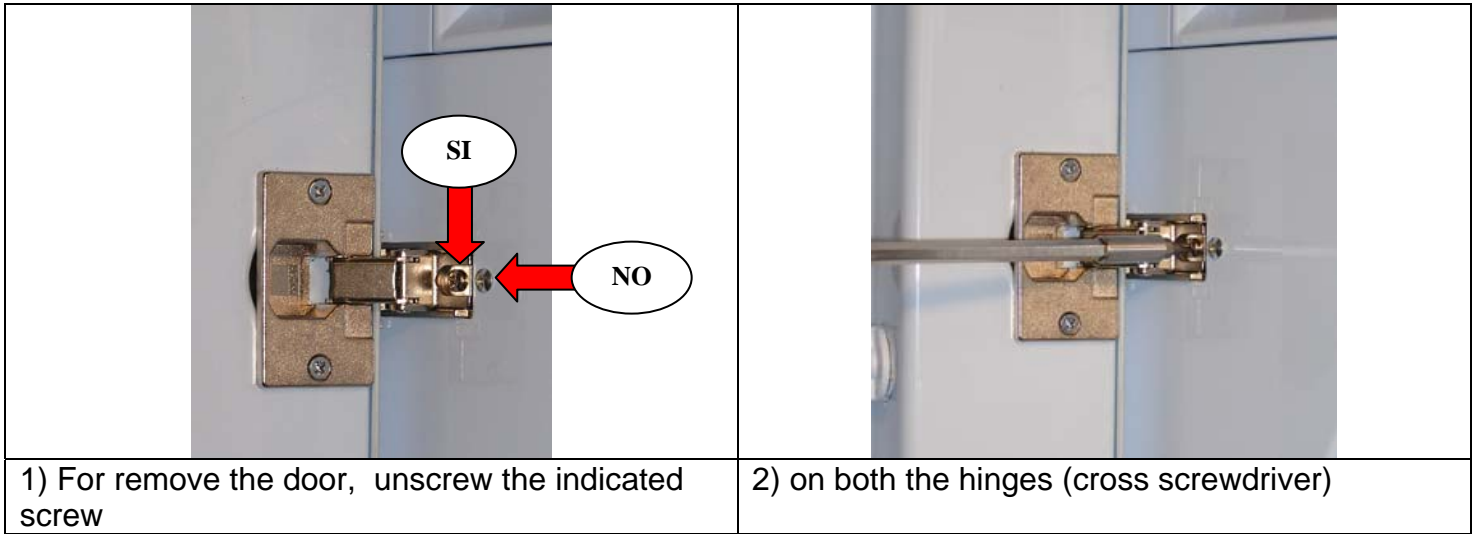
This appliance is intended for use by adults.

Do not allow children to tamper with the controls or play with the washing machine.

Do not allow children to approach the appliance.

Keep children away from the appliance.

5. Door dismount



6. Instruction for cleaning

Instructions for the cleaning of the product:

The surfaces have to be cleaned with water and soft clothes (e.g. micro fiber)

Do not use never chemical products or aggressives (e.g. abrasives clothes, etc.)

